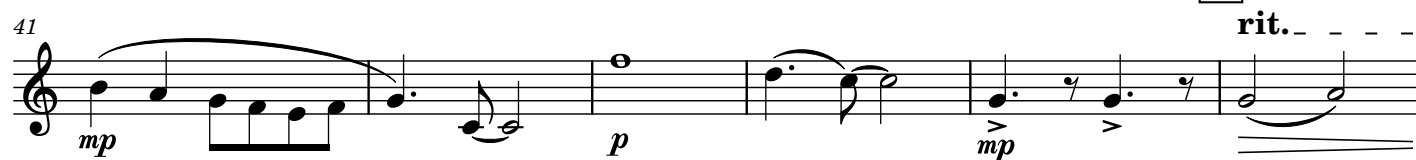
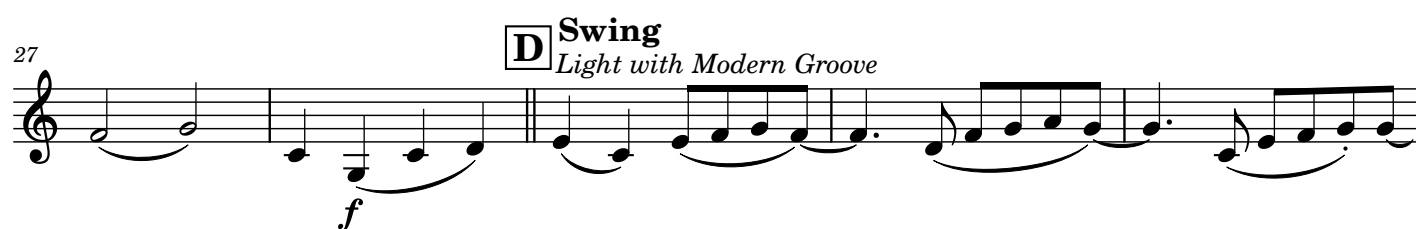
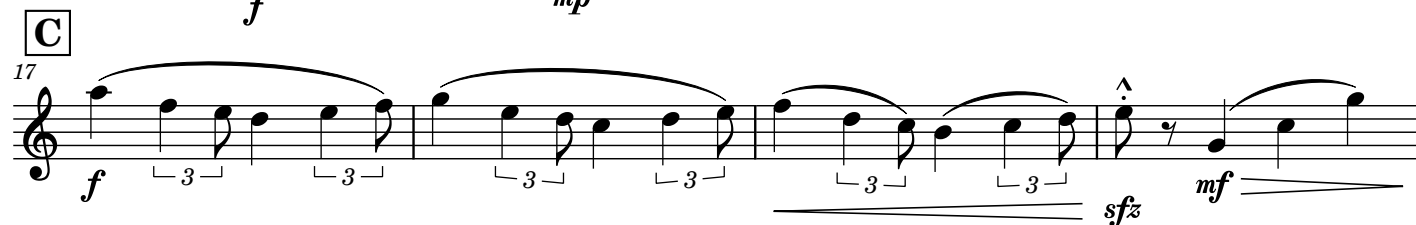
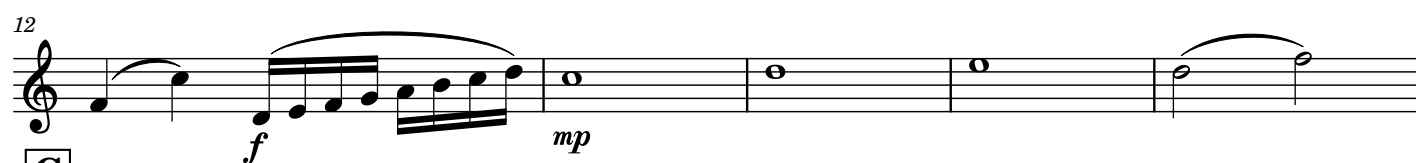
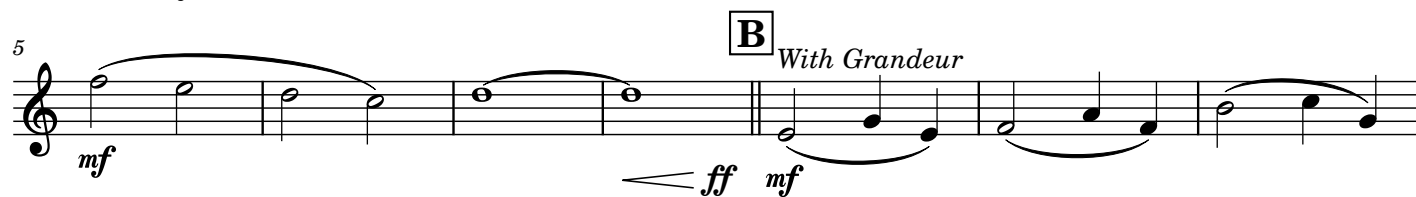
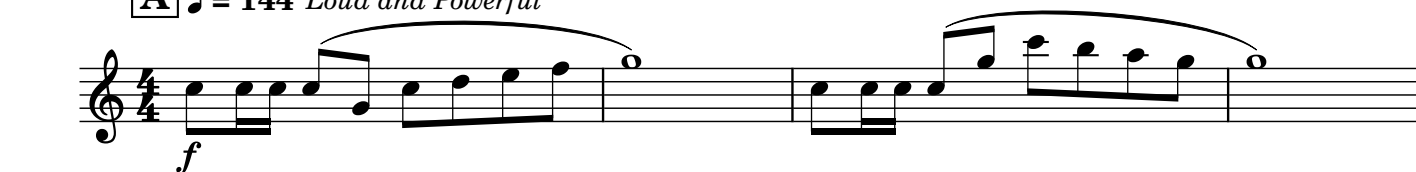


## B♭ Clarinet

## Gathering of The Nobles

(Epic Procession)

Jwells uh huh

**A** ♩ = 144 *Loud and Powerful***No Swing**  
*With Grandeur***F**

rit. - - -

2 - B $\flat$  Clarinet

## Gathering Of The Nobles

47  $\text{♩} = 128$  Swing  
With Nostalgia **G**

58  $p$   $mp$

62 **H**  $f$   $mp$   $\text{rit.}$   $\text{rit.}$

67  $\text{♩} = 112$  No Swing  
Winding Down  $p$  **I** **J** **K** **L**  $\text{accl.}$

88  $\text{♩} = 72$   
Calm, With Respite 6 4 8

91  $\text{♩} = 108$   
Loud and Powerful  $mf$

94 **M**

98

101  $f$  **N**

105

3 - B $\flat$  Clarinet

## Gathering Of The Nobles

110 *f* *mf*

114 **O**

119

123

126 **P**

130

133 **Q** *f*

137

141 *ff*

145

Detailed description of the musical score: The score is for a B-flat Clarinet part. It begins at measure 110 with a treble clef and a key signature of two sharps. The first staff (measures 110-113) includes a slur over measures 110-111, a dynamic marking of *f* at measure 112, and *mf* at measure 113. A slur continues over measures 114-118. Measure 114 has a rehearsal mark **O** above it. The second staff (measures 119-122) continues the melody. The third staff (measures 123-125) also continues. The fourth staff (measures 126-129) has a rehearsal mark **P** above measure 127. The fifth staff (measures 130-132) continues. The sixth staff (measures 133-136) has a rehearsal mark **Q** above measure 134 and a dynamic marking of *f* at measure 135. The seventh staff (measures 137-140) continues. The eighth staff (measures 141-144) has a dynamic marking of *ff* at measure 141 and ends with a double bar line. The ninth staff (measures 145) shows the final measure with a double bar line.